



ULTRABAC SOFTWARE

Backup & Disaster Recovery Software for Windows NT® & Windows® 2000

QUICK INSTALL GUIDE

- ① - Insert CD-ROM in drive and run CD.
 - Wizard should then present you with prompts:
 1. UltraBac Setup Information - Click On: **"Next"**
 2. Choose Destination - Click On: **"Next"**
 3. Setup Type - Click On: **"Typical"**, then **"Next"**
 4. Select Program Folder - Click On: **"UltraBac Default"**, then **"Next"**
 5. Install Shield Wizard Complete - Click On: **"Launch UltraBac"**, then **"Finish"**

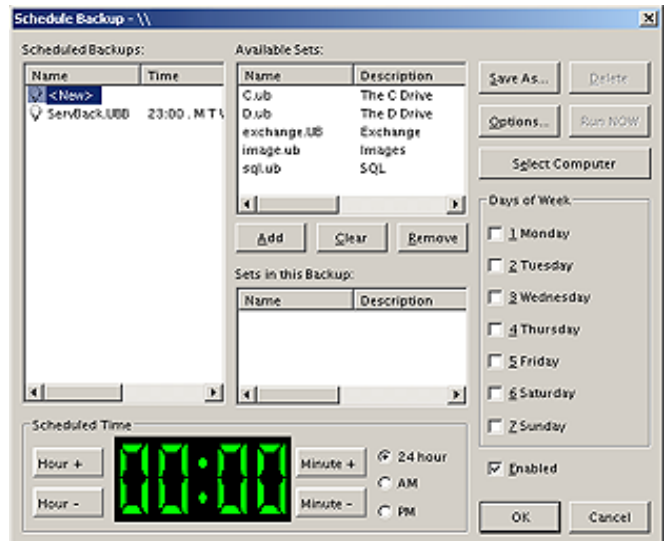
- ② - Perform UltraBac Scheduler Installation:
 1. Enter Account - Use default: **"DOMAIN\UltraBac"**
 2. Type password of your choice.
 3. Confirm password.
 4. Account does not exist. Create account? - Click On: **"Yes"**
 5. Scheduler service installed. Would you like to start it now? - Click On: **"Yes"**, then **"Ok"**

-UltraBac setup is then complete.

- ③ - Tape drives are automatically recognized by UltraBac.
 - Confirm this at the very top of the UltraBac Main Menu.
ie: **"UltraBac Single Server Edition (Backup) OnStream Tape 0"**

- ④ - Backup Window will appear:
 1. Under Operation - Click On: **"Backup all Local Fixed Drives & Registry"**, then **"Next"**
 2. Create New Set - Use Default and Click On: **"Save Set"**
 3. Save Set - Use the default Set File Name and Click On: **"Save"**
 4. Save UltraBac Backup Set - Use Default and Click On: **"Save"**
 5. Backup set has been created. Exit Create New Set - Click On: **"Cancel"**
 6. Exit New Backup - Click On: **"Cancel"**

- ⑤ - Schedule your newly created backup set.
 - From the Main Menu select the following:
 1. Select: **"Scheduler"**
 2. Click On: **"Schedule Backups..."**
 3. Highlight: **"Computer_All.UB"** from available sets.
 4. Click On: **"Add"**
 5. Days of Week - Check: boxes of the days you wish the backup set to run.
 6. Scheduled Time - Click On: buttons to adjust time to run the backup.
 7. Click On: **"Save As..."**
 8. Designate File Name, ie: **"Full_Backup"**
 - UltraBac can now be closed.
 - Scheduling is complete, and the backup is now set to run automatically.



Note: This brief process has created an UltraBac set and group, and launched the scheduler service. It is an extremely abbreviated set of instructions. Please refer to UltraBac's on-line help documentation for comprehensive instruction regarding this software. If you still require assistance contact UltraBac technical support at (425) 644-6000.